

## TABLE OF CONTENTS

Admissions, Passes.....	3
General Information .....	4
Picnic.....	4
Premium Pay-out.....	5
Eligibility / Ages .....	5
Code of Conduct.....	5
Daily Program .....	6
Maps & Directions (also see back cover).....	6
<b>Department J1 – Family &amp; Consumer Science Southern District Contests .....</b>	<b>9</b>
Ada Country Oral Presentations.....	9
Southern District Oral Presentations .....	9
Ada County Fashion Revue.....	10
Southern District Fashion Revue.....	11
Poster Contest.....	11
Club Booth Displays .....	12
“Your Favorite Cookie” Contest .....	12
Lego Robotics .....	12
<b>Ada County 4-H Interview &amp; Family &amp; Consumer Science Exhibit Evaluation .....</b>	<b>13</b>
Department J2 – Cloverbuds .....	14
Department J3 – Citizenship .....	15
Department J4 – Communications & Expressive Arts.....	15
Department J5 – Environment.....	15
Department J6 – F & CS Projects.....	15
Department J7 – Healthy Living .....	16
Department J8 – Personal Development & Leadership .....	17
Department J9 – Plants & Animals .....	17
Department J10 – Science & Technology .....	17
<b>Family &amp; Consumer Science 4-H Exhibitor’s Schedule F&amp;CS .....</b>	<b>18</b>
<b>Jr. Livestock (4-H &amp; FFA).....</b>	<b>19</b>
Eligibility.....	19
Entries .....	19
4-H & FFA Rules & Information .....	20
Releases & Check-out / Judges .....	21
Biosecurity .....	21
Herdsmanship.....	22
<b>Market/Breeding .....</b>	<b>23</b>
2016 Buyers .....	23
General Market Livestock Rules .....	24
Market Animal Sale .....	25
Pictures.....	25
Insurance/Promotion Program & Fees .....	25
<b>Large Livestock</b>	
Department J14 – Beef.....	26
Department J15 – Sheep.....	29
Department J16 – Swine.....	31
Department J17 – Dairy / Pack Goats .....	33
Department J18 – Meat Goats.....	34
Department J19 – Dairy Cattle .....	36
Department J20 – Llama / Alpaca .....	38
Department J20H – Horse .....	39
<b>Small Animals</b>	
Market Sale & General Rules.....	44

Department J21 – Cat .....	44
Department J22 – Cavy .....	45
Department J23 – Dog .....	47
Department J24 – Pocket Pet.....	50
Department J25 – Poultry .....	50
Department J26 – Pygmy Goat.....	55
Department J27 – Rabbit .....	57
Department J28 – Educational Display Contest .....	59
Department J29 – Farm Mechanics .....	60
<b>Round Robin</b>	
Ada County Large Livestock J30 .....	61
Ada County Small Animal.....	62
Western Idaho Fair Invitational Large Livestock .....	62
Western Idaho Fair Invitational Small Animal.....	63
<b>Judging Contest 4-H &amp; FFA</b>	
Large Livestock J31.....	63
Small Animal.....	64
Tractor Driving J32 .....	64
<b>4-H Livestock Judging Entry Form .....</b>	<b>65</b>
<b>Exhibitor’s Schedule Livestock .....</b>	<b>66</b>
<b>Entry Forms .....</b>	<b>67 - 69</b>

## ADMISSIONS

Daily Gate Admission, age 12 and over.....	\$9.00
Daily Gate Admission, Seniors, age 62 and over.....	\$7.00
Daily Gate Admission, age 6-11.....	\$6.00
Daily Gate Admission, under 6.....	FREE
<b>General Parking.....</b>	<b>FREE</b>

## ADVANCE TICKET PRICES

### JULY 10 - AUGUST 17

Age 12 and over.....	\$7.00
Seniors.....	\$5.00
Age 6-11.....	\$4.00

## 4-H & FFA FAIR PASSES

Member passes are only for youth entered in the Western Idaho Fair.

### • Free 5 day or single day passes for:

1. Enrolled Ada County 4-H members (must present copy of Fair Entry Form and must sign for passes)
2. Certified Ada County 4-H leaders who have met requirements (must sign for passes)

**Where & When: July 5–August 18, 9 a.m. – 4:30 p.m.**  
Premium Office, 5610 Glenwood, Boise (287-5663)

### • Free 5 day or single day passes for:

1. Canyon County enrolled members and leaders
2. Enrolled 4-H members, chaperones, leaders from other Idaho counties entering in the Western Idaho Fair in allowed classes.
3. All FFA Youth and Advisors

**Where & When: July 5–August 18, 9 a.m. – 4:30 p.m.**

### Premium Office Hours

The Premium Office is on the east side of the Small Animal Building at Expo Idaho, 5610 Glenwood, Boise 83714, (208)287-5663, Fax: (208)287-5665.

The office will be open during livestock weigh-in.

July 5 – Aug. 27: from 8:00 a.m. – 4:30 p.m.

Aug. 28: from 10:00 a.m. – 7:00 p.m.

Aug. 29 – Sept. 8: from 9:00 a.m. – 4:30 p.m.

The office is closed for Labor Day weekend, including Fri. Sept. 1

**Parent Passes for parents of all 4-H/FFA exhibitors for Ada and Canyon Counties**

Purchase one (1) five (5) day pass for \$18.00 and a second five (5) day pass for \$7.00 LIMIT TWO (2) PER FAMILY. Purchase these passes at the Premium Office on the Western Idaho Fair Grounds. Must purchase these passes before the fair opens. After the fair starts parents must pay full price at the gate.

**GENERAL INFORMATION**

The University of Idaho provides equal opportunity in education and employment on the basis of race, color, religion, national origin, gender, age, disability, or status as a Vietnam-era veteran, as required by state and federal laws. In compliance with the Americans with Disabilities Act of 1990, those requesting reasonable accommodations need to contact the Ada County Extension Office one week before the date you plan to attend at 5880 Glenwood Street, Boise, ID 83714, 287-5900.

All youth experience positive personal growth and increased self-reliance through encouragement and support of a wide variety of learning experiences. 4-H prepares young people to make a positive impact in their communities and the world. The junior youth show at the Western Idaho Fair is the culmination of their learning experiences for the past year as a result of their activities in 4-H and FFA. This handbook has guidelines for 4-H and FFA youth to participate at the county, district and state levels.

Statewide activities are those events open to youth living in Idaho and Eastern Oregon and enrolled in Idaho 4-H or FFA. (Livestock Judging Contest, Small Animal Judging Contest).

4-H Southern District activities are events open to Idaho 4-H youth enrolled in the nine (9) contiguous counties (Adams, Valley, Payette, Washington, Gem/Boise, Canyon, Owyhee, Ada and Elmore). District Oral Presentations, District Style Revue, Amalgamated Cookie Contest, Western Idaho Fair Invitational Small Animal Super Round Robin, Western Idaho Fair Invitational Large Animal Super Round Robin.

Ada/Canyon 4-H and FFA events are open to 4-H and FFA youth enrolled in Ada and Canyon County programs.

Ada 4-H/FFA events are open only to 4-H/FFA youth enrolled in Ada County programs.

**Western Idaho Fair**

**4-H/FFA Agriculture Scholarship**

The Western Idaho Fair will provide at least two \$1000.00 scholarships for 4-H and FFA members who are outstanding students, who have a history of participation in the Western Idaho Fair youth agriculture programs and who participate in the 2017 Western Idaho Fair.

The Western Idaho Fair furnishes applications directly to County Extension Offices, FFA Chapters and local high school counseling departments, or they may be obtained at the Western Idaho Fair Office. All applications must be returned or mailed directly to the Western Idaho Fair Office at the following address:

4-H/FFA Agriculture Scholarship, Western Idaho Fair, 5610 Glenwood, Boise, ID 83714. Applications must be received in the Western Idaho Fair Office by April 3<sup>rd</sup>, 2018 or be post marked by April 3<sup>rd</sup>, 2018.

The Western Idaho Fair will make final approval and notification of each scholarship recipient. 2017 Scholarship recipients will be recognized at the Western Idaho Fair Junior Livestock Market Sale Tuesday, August 22, 2017.

**AWARDS PROGRAMS**

Family and Consumer Science

Date: Monday August 21  
Time: 7:00 pm  
Place: 4-H Department, Expo Building

Horse

Date: Wednesday, August 23  
Time: 7:00 pm  
Place: Ada County Extension Office, 5880 Glenwood St.

Livestock – Round Robin awards

Date: Monday, August 21  
Time: 7:30 pm  
Place: Ring 1 and 2

Ada County also has a recognition night that takes place at the end of the 4-H year in October or November.

**JUNIOR EXHIBITOR PICNIC**

Sponsored by the **Ada County 4-H Endowment Fund**

Where:	In the Dairy Arena
When:	Tuesday, August 22 from 4:00-6:00 p.m.
Who:	All 4-H/FFA youth, 4-H leaders and FFA Advisors. Market Sale Buyers will be issued special tickets at no cost.
Where to purchase tickets:	Non- enrolled youth and other family members may purchase tickets at the picnic. Cost is \$5.00.
Who to thank:	Businesses Contributing to the picnic: Ada County 4-H Endowment Fund, Inc., Gem State Kiwanis, Ada County Farm Bureau, Idaho Dairymen, Idaho Wheat Commission, Nicholson Farms, Yanke Machine Shop, Nagel Beverage Company, Charlie and Heidi Gibson, Owyhee Seeders, Ada County 4-H Leaders Association, and Allstate Foundation.

## PREMIUM PAY OUT INFORMATION

**It is the exhibitor's responsibility to claim premium money. Reminders are NOT sent, cash is not mailed.** Premiums will be paid directly to the exhibitor, their parent or guardian. Present your copy of the fair entry form to receive premiums. If your copy is not available, identification is required. All persons receiving premium money will sign for it.

### **PREMIUM OFFICE PAY-OUT SCHEDULE:**

**Monday, August 21** from 3:00 – 8:00 p.m. and Tuesday August 22 through Sunday, August 27 – noon to 8:00 p.m. daily.

**Monday, August 28** – 10:00 a.m. to 7:00 p.m.

**Tuesday, August 29 through Friday, September 8** – 9:00 a.m. to 4:30 p.m.

The Premium office will be closed for the Labor Day Weekend, including the Friday prior to Labor Day. After September 8, 2017, **any premium money not claimed will be considered a donation and will revert to the Western Idaho Fair General Fund.**

### **Danish System of Judging**

The 4-H Program at the Western Idaho Fair uses a modified Danish System of awards. The process used is interview judging.

1. Cloverbuds receive participation stickers or ribbons. They are only interviewed to help them grow and develop. Cloverbud participation is optional.
2. 4-H youth will be interviewed to evaluate accomplishment of self-set goals and skills learned.
3. 4-H/FFA youth will be evaluated on their exhibited item against a standard of excellence and completion requirements.

The Modified Danish System allows all exhibits to receive a blue, red, or white ribbon placing.

#### ***Blue***

Best Growth in Project  
Shows Best Understanding of Subject & Superior workmanship for age and experience  
Shows Leadership Ability  
Attractive Project

#### ***Red***

Better Project Growth  
Medium Personal Growth  
Better Understanding of the Subject  
Neat Exhibit

#### ***White***

Good Project Growth  
Good Understanding and Workmanship



## ELIGIBILITY/AGE

4-H age is the age of the individual on January 1 of the current 4-H year. Youth ages 8-18 are eligible to participate in competitive activities/events. (See showmanship for age category for showmanship classes).

Category of participation	Youth ages *changed from 2016*
Cloverbud (4-H)	Age 5 to 7 years old as of January 1
Junior (4-H)	Age 8 to 10 years old as of January 1
Intermediate (4-H/FFA)	Age 11 to 13 years old as of January 1
Senior (4-H/FFA)	Age 14 to 18 years old as of January 1



### **4-H/FFA CODE OF CONDUCT**

All 4-H and FFA activities and events will adhere to the appropriate Code of Conduct and the Idaho 4-H Program Policies and Procedures (document # 91605). Idaho families and youth trust the University of Idaho Extension system to provide educational programs in a safe environment for all participants. The opportunity to participate in and/or work with University of Idaho 4-H Youth Development program is a privilege and honor, not a right. Volunteers are to be positive role models. Youth and parents/guardians are expected to demonstrate appropriate behavior at all times. The following Code of Conduct has been established as the foundation for all individuals participating in University of Idaho Extension programs. The Code of Conduct maybe found: <http://www.extension.uidaho.edu/4hpan/Code%20of%20Conduct%2010-11%204-H%20year.pdf>

#### **Dress code:**

4-H members and leaders are expected to dress appropriately while representing 4-H and FFA at the Western Idaho Fair. Dress guidelines include no exposure of underwear and midriff area, no spaghetti strap or see through shirts and appropriate neckline. Closed-toe and closed-heeled shoes are required to be worn around animals. See showmanship division for description of appropriate show apparel.

#### **Crop of the Year: Hops**

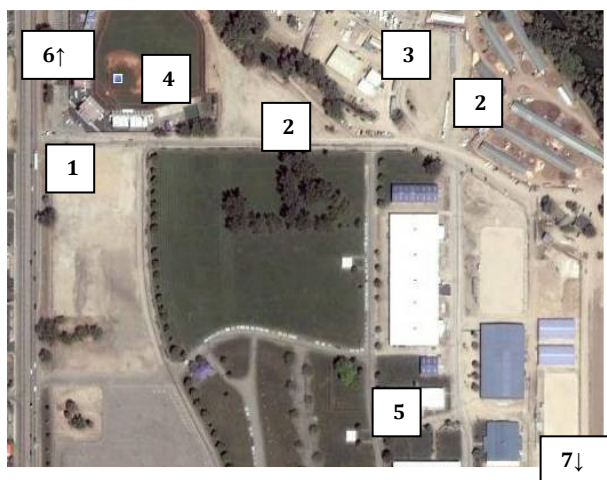


### POSTER SIZES

Family and Consumer Science/ Misc Posters p.15	Hanging posters 14"x22"	Trifold standing 28"x22" must fold to 14"x22"	Display box 10"x12"x15"
Special F&CS Poster Contest p.11	Poster size 14"x22"		
Educational Display contest p. 60 (exhibit in the animal area):			
Livestock Horse Pygmy goat	Minimum size 14"x22" Max size to fit exhibitors stall or pen		
Small animal or pocket pet	22" x 28" (or 20" x 30" foam core) maximum. No trifold allowed		

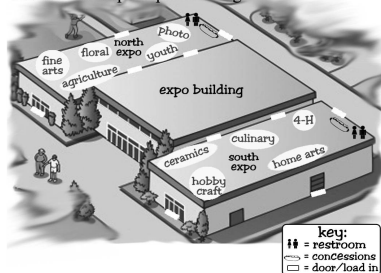
### Western Idaho Fair Grounds

5610 Glenwood Boise, Idaho 83714 (208)287-5663



1. Livestock Entrance off Glenwood
2. Livestock Parking
3. Boise Riverside RV Park
4. Hawks Baseball Stadium
5. Premium Office
6. Towards Extension Office (1/4 mile from the Livestock entrance-turn right at the light at Marigold)
7. Grandstand Gate (off Chinden, across Fred Meyers)

Exhibitors Map: Expo Building



key:  
 ## = restroom  
 <img alt="concessions icon" data-bbox="315 885 325 895"/> = concessions  
 <img alt="door/load in icon" data-bbox="315 895 325 905"/> = door/load in

### DAILY PROGRAM

#### Wednesday July 5 – Monday, July 17

Before 4:30 -Pre-registration for all Ada County Oral Presentations

#### July 5 – August 1

9:00 a.m. to 4:30 p.m. - Premium Office accepting Livestock & Family and Consumer Science entry forms for Ada Co. 4-H members, FFA and out-of-county 4-H members.

#### July 5 – July 21

9:00 a.m. to 4:30 p.m. – Extension Office accepting Horse fair entries.

#### Wednesday, July 5 thru Friday, August 18

9:00 a.m. to 4:30 p.m. - Present copy of the Fair entry form to pick up picnic and fair passes at the Premium Office. Parent Passes are available as well at the Premium Office. (Monday – Friday only)

#### Wednesday, July 5 – Friday, August 11

9:00 a.m. – 5:00 p.m. - Sign up for Interview evaluation appointments. (Extension Office: 287-5900)

#### Thursday, July 20

6:00 p.m. - Fair orientation picnic.  
 7:00 p.m. - 4-H/FFA Fair Orientation for all Members, Leaders, and Parents. Includes all Family and Consumer Science, Horse, and Livestock Projects.

#### Friday, July 21

4:30 p.m. -Horse fair entries due University of Idaho Ada County Extension Office, 5880 Glenwood St, Boise –**Last Day**

#### August 1, 2, & 3

Ada County Oral Presentation Contest at Extension Office.  
 Pre-registration by July 17  
 August 1, 2:00 p.m. – 8:00 p.m.  
 August 2, 2:00 p.m. – 8:00 p.m.  
 August 3, 2:00 p.m. – 8:00 p.m.

#### Tuesday, August 1

before 4:30 p.m. - Livestock, Small Animal, Family and Consumer Science fair entry forms are due in the Premium Office, 5610 Glenwood, Boise – **Last Day**  
 Lego Robotics registration due

#### Friday, August 4

Horse corrections or changes due at the Extension Office.

#### Monday, August 7

Robotics posters due at the Extension Office

#### Saturday, August 12

8:00 a.m. (by appointment only) Horse Interview Evaluations, Western Riding Club, 3630 Riding Club Lane, Boise. Horse record books due at this time.

#### Monday, August 14 & Tuesday, August 15

**It is mandatory that all Ada County small and large animal livestock members, and all Family and Consumer Science members be interview judged with their record books. By appointment only (287-5900).**

August 14 – 9:00 a.m. to 7:00 p.m. – 4-H member - bring record books to the South Expo Building.  
 August 15 – 9:00 a.m. to 7:00 p.m. – 4-H member - bring record books to the South Expo Building.  
 By 7:00 p.m. - Special 4-H Posters due in the South Wing of Expo Building.

### **Monday, August 14 & Tuesday, August 15**

August 14 – 9:00 a.m. to 7:00 p.m. or

August 15 – 9:00 a.m. to 7:00 p.m. - Drop off Educational Displays and entry forms to the South wing of the Expo Building, 5610 Glenwood St, Boise. Must attach numbered tie tag filled out to back of poster/display. Must have name, club and age on back of poster/display.

### **Tuesday, August 15 & Wednesday, August 16**

8:00 am – 8:00 pm – Livestock and Small Animals are allowed to decorate their exhibit area and bring in tack.

### **Wednesday, August 16**

8:00 a.m. – 10:00 a.m. Submit perishable food items for judging in the South Expo Building.

9:00 a.m. – Ada County 4-H FCS exhibit judging, South Expo Building

9:00 a.m. – 3:00 p.m. Submit narration form for Ada County Fashion Revue at the South Expo Building.

5:00 p.m. – 7:00 p.m. Decorate Club display booths (Expo Building).

### **Thursday, August 17**

10:00 a.m. to 5:00 p.m. – Club display booth decorations completed (Expo Building).

**Overnight horses** will be checked into stalls beginning at 3:00 p.m. Thursday, August 17, but no later than Friday, August 18, by 10:00 a.m.

12:00 p.m. – Educational Display Judging complete.

12:00 p.m. – Large Animal Educational Display Posters available for hanging - Small Animal Barn.

4:00 p.m. to 8:00 p.m. – Bring in all livestock. Market animals will be weighed as unloaded at the following times and scales:

5:00 – 6:30 p.m. Beef at Digital Scales

7:00 – 9:00 p.m. Sheep and Meat Goats at Small Scales

7:00 – 9:00 p.m. Swine at Digital Scales

Any animals not weighed during these times will be weighed after the others are finished. Animals will be allowed to weigh only once unless an exception is granted by the Junior Livestock Superintendents. All animals must be weighed in prior to 9:00 p.m. to be eligible for sale.

**Dairy, Beef, Sheep, and ALL Goats will NOT be allowed in the barn without a Health Certificate or vet check. Veterinarians will be available for beef, sheep, market goat and swine weigh-in at 5:00 – 9:00 p.m.**

4:00 p.m. to 9:00 p.m. – Enter all Ag Farm Mechanics exhibits. (South side of Livestock Barn).

4:00 p.m. to 9:00 p.m. – Check in Dairy Cattle – enter through Grandstand Gate off Chinden.

5:00 p.m. to 8:00 p.m. – Check in Dairy Goats, Meat Goats and Pygmy Goats with Veterinarian.

5:00 p.m. to 8:00 p.m. - Pygmy Goat check-in with proof of ownership and registration papers.

5:00 p.m. to 8:00 p.m. – Veterinarian check for Dairy Cattle.

5:00 p.m. to 8:00 p.m. – Check in Rabbits, Cavies (with veterinarian), and Poultry (blood test) – enter Grandstand Gate off Chinden.

5:00 p.m. to 8:00 p.m. – Enter Eggstravaganza Egg Deco Contest, Breed of the Day Poster, and Eggs for quality – Small Animal Building.

7:00 p.m. to 8:00 p.m. – Weigh-in of Rabbit & Poultry Commercial Pens.

7:00 p.m. to 8:00 p.m. – Check in Llamas & Alpacas – enter through Grandstand Gate off Chinden. Will be checked by a veterinarian.

7:00 p.m. – Ada County Fashion Revue Practice, Western Town Stage

### **Friday, August 18**

7:30 a.m. – 8:30 a.m. – Dog check in

8:00 a.m. – 9:00 a.m. – Free Pancake breakfast at the 'On The River' RV Park for 4-H/FFA members and family

8:00 a.m. – Market Beef Meeting (required) dairy ring

8:00 a.m. – Sheep Meeting (required) Ring 3

8:00 a.m. – Market Swine Meeting (required) Ring 1-2

8:00 a.m. – Market Goat Meeting (required) Ring 3

8:30 a.m. – Dog Exhibitor's meeting

9:00 a.m. – Horse Trail & Versatility Classes (D&B Arena)

**9:00 a.m. – All Large Livestock pen cleanup complete**

9:00 a.m. – 4-H & FFA (all counties) Large Animal Judging Contest (Ring 1) followed by Dairy Judging

9:00 a.m. – Dog Classes begin (Dairy Ring)

9:00 a.m. – Cavy Quality

9:00 a.m. – 12:00 p.m. – Dog Judging Contest

10:00 a.m. – 12:00 p.m. – **Mandatory** Dairy Goat check-in

**10:00 a.m. – All Small Animal clean-up completed**

11:00 a.m. – Bidding opens on small animal market sale

12:00 – 6:00 p.m. – Club Theme Display Contest

12:00 – 6:00 p.m. – Fair Theme Contest

12:00 p.m. – Small Animal Judging Contest (Small Animal Building)

1:00 p.m. – 8:00 p.m. – Southern District Oral Presentations

1:00 p.m. – Sheep Breeding Classes (Ring 3)

2:00 p.m. – Rabbit Quality in Small Animal Building – Breeders Choice to follow Quality Judging

2:30 p.m. – Livestock and Dairy Judging Contest Results

5:00 p.m. – Dairy Goat Showmanship (Ring 3)

5:00 p.m. – Quality Judging of Swine, Market and Breeding (Ring 2)

7:00 p.m. – Pocket Pets Check in – with showmanship immediately following.

### **Saturday, August 19**

8:00 a.m. – Dairy Goat Quality Classes (Ring 3)

8:30 a.m. – Cavy Showmanship

9:00 a.m. – Horse Showmanship (D&B Arena)

– Horse Bareback Equitation Western or English (D&B Arena)

**9:00 a.m. – All Large Livestock pen cleanup complete**

9:00 a.m. – Swine Showmanship (Ring 2)

**10:00 a.m. – All Small Animal clean-up completed**

10:00 a.m. – Treasure Valley 4-H/FFA Dairy Replacement Weigh-in

11:00 a.m. – Alpaca Showmanship (following Open Class)

1:00 p.m. – 8:00 p.m. – Southern District Oral Presentations

12:30 p.m. – Pre-Contest meeting for Tractor Driving Contestants

1:00 p.m. – Tractor Driving Contest, 4-H and FFA

1:00 p.m. – Ada County Fashion Revue Check-in

1:30 p.m. – Rabbit Showmanship Clinic with Showmanship immediately following in Small Animal Building

1:30 p.m. – Sheep Showmanship Demonstration (Ring 1 & 2)

1:45 p.m. – Ada County Fashion Revue line up at Western Town Stage

2:00 p.m. – Sheep Showmanship (Ring 1 & 2)

2:00 p.m. – Ada County Fashion Revue at Western Town Stage

2:00 p.m. – Alpaca PR Course (following Open Class)

2:30 p.m. – Southern District Fashion Revue check in

3:45 p.m. – Southern District Fashion Revue line up at Western Town Stage

4:00 p.m. – Southern District Fashion Revue at Western Town Stage

- 6:00 p.m. – Pygmy Goat Show, Showmanship and then Quality (Ring 3)
- 7:00 p.m. – Horse Costume Class (D&B Arena)
- 7:30 p.m. – Eggstravaganza Decorating Contest Judging, Small Animal Bldg
- 8:00 p.m. – Crowing Contest, Small Animal Building

### **Sunday, August 20**

- TBA – Pack Goat Trail Course
- 8:00 a.m. to 9:30 a.m. – Swine Market Animal Pictures  
– Pictures of Treasure Valley 4-H/FFA Dairy Replacement Heifers selling this year
- 8:00 a.m. – Poultry Showmanship Check in
- 8:15 a.m. – Poultry Showmanship Clinic
- 8:30 a.m. – Poultry Showmanship, Small Animal Bldg.
- 9:00 a.m. – Horse Western Equitation (D&B Arena)  
– Horse Western Riding (D&B Arena)  
– Horse Western Reining (D&B Arena)
- 9:00 a.m. – All Large Livestock pen clean-up complete**
- 9:00 a.m. – Quality Judging of Market and Feeder Lambs (Ring 1). Designate Sale Lamb
- 9:00 a.m. – Dairy Cattle Showmanship (Dairy Ring)  
Followed by Quality Class
- 9:30 a.m. – Sheep Market Animal Pictures
- 10:00 a.m. – All Small Animal clean-up completed**
- 11:00 a.m. – Llama Showmanship (following Open Class)
- 12:00 – 2:00 p.m. – Youth Amalgamated Cookie Contest Entry (S. Wing Expo 4-H depart.)
- 1:00 p.m. – Meat Goats – Showmanship/Quality/Breeding (Ring 3)
- 2:00 p.m. – Cat Check in (Small Animal Building) with Cat Showmanship immediately following
- 2:00 p.m. – Beef Showmanship Classes (Ring 1 and 2)  
– Beef Quality Classes (Ring 1 and 2) to follow Showmanship  
– Breeding Classes to follow Quality
- 2:00 p.m. – Llama Pack Obstacle (following Open Class)
- 2:30 p.m. – Judging of Amalgamated Cookie Contest (S. Wing Expo 4-H depart)
- 3:00 p.m. – Beef Market Animal Pictures-During Show
- 5:15 p.m. – Cavy, Rabbit, & Poultry Fun Events –check-in
- 6:15 p.m. – Dogs, Pygmy Goats, and Cat Costume Contest Check in
- 7:00 p.m. – Horse –Drill Team Clinic (D&B Arena)
- 10:00 p.m. – Bidding closes on Small Animal Market Sale

### **Monday, August 21**

- 8:30 a.m. – Horse English Warm Up
- 9:00 a.m. – Horse English Classes (D&B Arena)
- 9:00 a.m. – Horse Miniature & Reinsmanship (Onion Ring)
- 9:00 a.m. – All Large Livestock pen clean-up complete**
- 10:00 a.m. – All Small Animal clean-up completed**
- 3:30 p.m. – Poultry Quality
- 4:30 p.m. – Jr. Large Animal Round Robin Showmanship (Ring 1, 2 & 3)
- 5:30 p.m. – Idaho Statesman Award Presentation for Large Livestock (Ring 1 and 2)
- 5:30 p.m. – Sr. Large Animal Round Robin Showmanship (Ring 1, 2 & 3)
- 6:30 p.m. – FFA Large Animal Round Robin Showmanship (Ring 1, 2 and 3)
- 7:00 p.m. – Family and Consumer Science Awards Ceremony, South Wing of Expo 4-H depart.
- 7:00 p.m. – Treasure Valley 4-H/FFA Dairy Replacement Sale (Dairy Ring)

- 7:00 p.m. – Horse Barrel Racing or 3 Leaf Clover Race (D&B Arena)
- 7:30 p.m. – Livestock Round Robin Awards (Ring 1&2)
- Before 10:00 p.m. – Obtain large animal & pygmy goat releases from division supervisor
- 10:00 p.m. – Check out Livestock and Horse Educational Displays

- 10:00 p.m. to 11:00 p.m. – Llama/Alpaca check out
- 10:00 p.m. to 1:00 a.m. – Check out large animals except for market animals, obtain release before 10 pm (If you are going to check out Tuesday morning, you must get your release slip signed Monday night before 10 pm!)
- 10:00 p.m. to 10:00 a.m. – Pygmy Goat Check out

### **Tuesday, August 22**

- 7:00 a.m. to 10:00 a.m. – Take remaining large animals home except for market animals.
- Important \* **ALL animals MUST BE out of the areas before 10:00 a.m.**
- 8:00 a.m. – Horse Gymkhana (D&B Arena and The Onion Ring) Before 10:00 a.m. – Remove horse trailers from Fairgrounds
- 10:00 a.m. – All Small Animal clean-up completed**
- 10:00 a.m. – Jr. Small Animal Round Robin Showmanship (Dairy Ring)
- 10:45 a.m. – Idaho Statesman Award Presentation for Small Animals (Dairy Ring)
- 11:00 a.m. – Sr. Small Animal Round Robin Showmanship (Dairy Ring)
- Before 3:00 p.m. – Sheep pens cleaned
- 4:00 p.m. – 6:00 p.m. – Junior Exhibitors Picnic
- 5:00 p.m. – 6:00 p.m. – Market lambs penned for sale (All exhibitors to be present)
- 5:30 p.m. – Registration of Market Sale Buyers
- 6:00 p.m. – Market Livestock Sale (Livestock Barn)  
All market livestock exhibitors must be present to sell animals
- 9:00 p.m. – Cavy, Rabbit, and Poultry Check out

### **Wednesday, August 23**

- 7:00 p.m. – Horse awards ceremony, Ada County Extension Office (5880 Glenwood St)

### **Saturday, August 26**

- 2:00 p.m. – Lego Robotics Sumo Bots Challenge  
South Expo Building 4-H Area
- 6:00 p.m. – Western Idaho Fair Invitational Super Round Robin Contest-Small Animals (UDI Ring)
- 7:30 p.m. – Western Idaho Fair Invitational Super Round Robin Contest – Large Livestock (4-H&FFA) (Ring 1, 2 & 3)

### **Monday, August 28**

- 10:00 a.m. to 7:00 p.m. – Check out Small Animal Educational Displays in EXPO BUILDING
- 10:00 a.m. to 7:00 p.m. – **CHECK OUT ALL 4-H EXHIBITS IN EXPO BUILDING.**
- We cannot be responsible for items left after that time.

### **Thursday, August 31**

- 7:00 p.m. – 4-H Leaders Association Meeting followed by FAIR EVALUATION in respective Advisory Councils – Ada County Extension Office