

Department 20

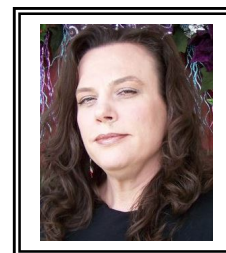
CERAMICS – POTTERY – CHINA - DOLLS

Sunday	Monday	Tuesday	Wednesday	Thursday	Friday	Saturday
AUGUST	14 11:00-7:00 Entry Day – South Expo	15 11:00-7:00 Entry Day – South Expo	16 9:00 Judging	17	18 FAIR OPENS	19
20	21	22	23 Noon-8:00 Premium Payout	24 Noon-8:00 Premium Payout	25 Noon-8:00 Premium Payout	26 Noon-8:00 Premium Payout
27 Noon-8:00 Premium Payout 10:00 Fair Closes	28 10:00-7:00 All Items are released, Premium Payout	29 - Aug. 31 & Sept. 5-8 9:00-4:30 All Premium Payout	Enjoy the Fair: Noon – 10:00 Weekdays & Sunday; Noon – 11:00 Fridays & Saturdays Contact: 208-287-5663 or premiumoffice@idahofair.com			



SUPERINTENDENT:
Shaun McClurg – Boise, ID

**ASSISTANT
SUPERINTENDENT:**
Julie Soper – Boise, ID



Please Note:

See Department 19 for all Youth entries, age 17 & younger. Youth are welcome to enter Department 20 if they wish to compete with adults.

How to enter:

Bring in your entries with the entry form(s) to the Fairgrounds on **Monday, Aug. 14 or Tuesday, Aug. 15 from 11:00 a.m. to 7:00 p.m.** Entries will be taken in the South Expo Building. If you want to enter early and reduce time spent in line on entry days, you have the following 2 options:

1. a) Mail or deliver **ONLY** your **entry form(s)** to the Premium Office, 5610 Glenwood, Boise ID 83714 by **August 8.**
b) Then bring your **entries** to the Fairgrounds on **Aug. 14 or Aug. 15** from 11:00 a.m. to 7:00 p.m.
- OR 2.** a) Enter online by **Aug. 8** at www.idahofair.com. Follow the link to Competitive Exhibits. The Western Idaho Fair will cover the \$2 convenience fee. There will be no charge to enter online unless a professional fee applies.
b) Then bring your **entries** to the Fairgrounds on **Aug. 14 or Aug. 15** from 11:00 a.m. to 7:00 p.m.

1. Entries will be received in the **South Wing** of the Exposition Building. Entries must be made on forms supplied by The Western Idaho Fair. Only **one** article, **one pair** or **one set** in a class will be accepted from any one person. Entries cannot be larger than 18"X24" in either height or width. Each article must be the sole work of the entrant. Teachers may guide and advise only. Each piece must have been made entirely within the past year.
2. Check classes carefully. Pieces entered in the wrong class will **not** be considered in judging. It is your responsibility to enter in the correct class. Help will be available on entry days. Entries will be displayed as deemed appropriate by the superintendent.
3. **JUDGING:** Wednesday, Aug. 16 – 9:00 a.m. This area will be closed during judging. Premiums will be awarded only on classes here listed. The Judges will not award premiums unless the articles are deemed worthy of merit. The Judges may award first, second or no premium according to their judgment. **Judges' decisions are final.**
4. **PREMIUM PAY-OUT:** Awards will be available at the Premium Office. Copy of Exhibitor Number Form should be

presented for Premium pay-out. Cash premiums will be paid to those entitled to awards on Aug. 23 through Aug. 27 from 12 Noon to 8:00 p.m. and on Exhibit Release day, Monday, Aug. 28 from 10:00 a.m. to 7:00 p.m. Starting Aug. 29 through Sept. 8, awards will be given out from 9:00 a.m. to 4:30 p.m. daily. The Office will be closed for Labor Day weekend, including the Friday prior to Labor Day. **Awards not claimed by Sept. 8, 2023,** will be considered a donation and will revert back to The Western Idaho Fair general fund.

5. **RELEASE:** Monday, Aug. 28 – 10:00 a.m. to 7:00 p.m. **In no case may exhibits be removed before 10:00 a.m. Monday, Aug. 28.** Exhibits which are not claimed within one week after the close of the Fair will be considered to have been abandoned and will be disposed of as the Manager of the Fair sees fit.

Exhibitor must present claim checks corresponding with entry tags when claiming exhibits. Exhibits must not be removed without the Superintendent or assistants being present to check out entries.

6. **ADDITIONAL RULES:** Exhibitors are requested to read the General Rules in the front of this Premium Book. Special Department Rules supersede General Rules.
Articles exhibited at The Western Idaho Fair in previous years will not be eligible for competition.
 All articles must have been fired in a ceramic kiln. **No plaster entries please.**
Purchased Bisque, cleaned & fired before purchased, will be judged on detail only.
Lamps will not be lighted. Entries in shadow boxes, mangers, etc. will be judged on entry only. **NO** article will be accepted that is cracked, chipped, or mended. No shade on lamps. Felt will be permitted on bottoms of bookends and chess pieces that are weighted.
We recommend that hot glue not be used on entries. Hot glue relaxes at 80 degrees.
7. An exhibitor who has once competed as professional in a division may not reclassify himself and enter competition again as an amateur in the same division.
8. All exhibits will be under the control and direction of the Superintendent but **in no case will the Manager of The Western Idaho Fair or the Superintendent be responsible for the loss or damage of any entry**, although every precaution will be taken to ensure the safety of these exhibits.

SPECIAL AWARDS

Theme Award: The Western Idaho Fair will award a plaque for the Exhibit that best portrays the Fair Theme “Let the FAIR Times Roll”.

Award will be chosen from all entries in Div. 8.

Best of Division Award: The Western Idaho Fair will award a plaque for the best of each division (Best of Divisions 4 – 7 and 12 – 19). Winners will receive in each group classification – first, second, third and fourth place ribbons. In addition, The Amalgamated Sugar Company LLC will award \$15 to the Best of Division 4 – 7 winners and \$7.50 to the Best of Division 12 – 19 winners.

People’s Choice of the Day: Fair visitors may vote for an entry in this department, either professional or amateur, to receive a popularity award. All entries are eligible except for those that have already received the award. Votes will be counted each day. The entry receiving the most votes each day will receive \$10 and a ribbon.

Judge’s Choice: The Western Idaho Fair will present four awards, one to be chosen by each Judge. The winners will be chosen from either the Professional or Amateur Division. Each will receive a cash award of \$15.

Special Division: Mattress Firm will award additional premiums for each class winner in Divisions 1, 2, 8, 9 and 10.

Unique Creativity Award: The Idaho Ceramic Club of Boise, Idaho will present a Special Award Plaque to both the Professional and Amateur Divisions.

Shaun McClurg will present a trophy for “Superintendent’s Choice” for both Professional and Amateur.

Julie Soper will present a trophy for “Creative Excellence” in Ceramics for both Professional and Amateur.

Thelma’s Ceramics – Boise, will present a Trophy for Most Outstanding Raku in Professional and Amateur and a Trophy for Best of Underglaze in Professional and Amateur.

Funny Farm – Meridian, will present a Trophy for Most Humorous Overall in Professional and Amateur.

Home Treasures – Caldwell, will present an award for Best of Holiday in Professional and Amateur and an award for Excellence in Porcelain in Professional and Amateur.

Western Idaho Ceramic Club will present a Trophy for Best of Creative Greenware Adaptation in Professional and Amateur.

Southwest Idaho China Painters will present an award for Best original design on a unique piece (China Painting) in Professional and Amateur.

Cat n’ Canary – Nampa, will present an award for Best Stoneware, Amateur and Professional and an award for Creativity in Acrylics Amateur and Professional.

Crazy House Glass and Ceramics – award for “Craziest Clay Creation” amateur and professional and an award for “Most Imaginative Glass”

Backdoor Ceramics will present an award for “Excellence in Glazes” in Amateur and Professional.

Patricia Wilcox will present an award for “Most Creative Use of Pearls and Metallics” in Amateur and Professional.

Flaming Earth Studio will present an award and \$30 for Professional, as well as an award and \$20 for Amateur in “Excellence in Glaze on a hand-built piece”.

Shaun McClurg will present awards in “Best of Non-Fired-Veterans, Best of Fired-Veterans and Creativity-Veterans”.

Muddy Buddies will present an award for “Excellence in Clay Work & Pottery: Pinch Pot Class” in Professional and Amateur.

Stray Cat Studio will present an award for “Most Creative in Clay Texture” in Professional and Amateur.

Ceramics Unique will present an award for “Unusual and Different Birdhouse” in Professional and Amateur.

SPECIAL GIFT CERTIFICATES

Potters Center – Boise: \$20 Gift Certificate in Professional and Amateur.

Additional Awards may be offered. They will be posted in the Department.

PROFESSIONAL DIVISIONS

An entry fee of \$2.00 per item will be charged in the Professional Division. “Professional” in this department refers to those whose productions are offered for sale and those who now or have in the past taught any technique included in the division they enter.

Premiums: For Divisions 1 and 2			
1 st - \$20	2 nd - \$15	3 rd - \$10	4 th – Ribbon

DIVISION 1

“KEEP IT ROLLING”

The winner of each class 1 – 5 will receive a Special Rosette and a \$20 award from **Mattress Firm**.

Class:

1. Bobble Head
2. Tractors
3. Fruits & Vegetables
4. Items Painted Into a Jukebox
5. Eggs!!

DIVISION 2

“CLASSICS”

The winner of each class 6 – 10 will receive a Special Rosette and a \$20 award from **Mattress Firm**.

Thelma’s Ceramics is sponsoring a “Busy Brush” award in the special division “Classics”. To take part entrants **MUST** enter all 5 classes. Points given for each placing: 1st = 3 pts, 2nd = 2 pts and 3rd = 1 pt. Entrant with the highest points will receive \$20.00.

Class:

6. Trucks
7. Christmas Trees 6” or Taller

8. Chip N Dip
9. Planter (No Plants, Live or Artificial)
10. Lamp (Traditional Wired)

DIVISION 3 PROMOTING CREATIVITY

A Special Rosette and Awards of \$35, \$20, and \$15 will be awarded by the **Idaho Ceramic Club**

Class:

11. Wood Stock

Premiums: For Divisions 4 thru 7
1st - \$20 2nd - \$15 3rd - \$10 4th - Ribbon

DIVISION 4 – PORCELAIN

Entries must be fired at cone 4 or higher – Temp. 2161 – 2200

Class:

12. Glazed
13. Miscellaneous Porcelain
14. Doll – miscellaneous

DIVISION 5 – CERAMICS

Entries must be Earthenware clay, fired NO hotter than cone 02 – Temperature 2098 or lower.

Greenware Adaptation

Class:

15. Cut out, carve, clay lift and sgraffito

Overglaze and Decals

16. Luster, gold, silver
17. Decal on ceramic
18. Decal on commercial ware

Glaze

19. Texture glaze
20. Crystal glaze
21. Gloss glaze
22. Pottery style or art glaze
23. Glaze and stain combination
24. Glaze with fired glass
25. Miscellaneous glaze

Underglaze

26. Airbrush
27. Brush work
28. Majolica
29. Applied pattern
30. Misc. Underglaze
31. Paper-cuts, Stencil, Screen print
32. Christmas
33. Halloween
34. Miscellaneous holiday or occasion

Non-Fired Media

35. Airbrushing
36. Drybrush
37. Applied pattern
38. Opaque stains
39. Pearls and metallics
40. Translucents, Paint Sticks and Pastels
41. Marbleized
42. Mixed media (paper, napkin, etc.)
43. Christmas
44. Halloween
45. Miscellaneous holiday or occasion

Purchased and Commercial Bisque

46. Glaze miscellaneous
47. Underglaze – utility item
48. Underglaze Miscellaneous
49. Non-fired miscellaneous

DIVISION 6 – CHINA PAINTING

Framed pieces – frame and matt cannot exceed 2”

Class:

50. Naturalistic
51. Bird – Animal – Fish
52. Scene
53. Brush, line, or pen work
54. Fruits, vegetables
55. Gold, silver, or luster
56. Miniature – under 4” high and 6” in diameter
57. European style
58. Portraits
59. Local seminar/workshop piece
60. Miscellaneous NOT listed above
61. Holiday
62. Vase

DIVISION 7 – CLAY WORK, POTTERY, RAKU & STONEWARE

Entries can be fired up to Cone 5 or higher – Up to temp 2205 plus

Clay Work and Pottery

Class:

63. Sculpture
64. Pinch
65. Coil
66. Slab
67. Clay puzzled
68. Wheel thrown 6” or under
69. Wheel thrown 7” or over
70. Wheel miscellaneous
71. Miscellaneous clay work
72. Miscellaneous Glaze

Raku

73. Wheel thrown
74. Hand modeled
75. Gloss glaze
76. Matte glaze
77. Matte & Gloss Combo
78. Horse hair raku
79. Slip resist, smoke or pit fired
80. Miscellaneous

Cast Stoneware

81. Glaze
82. Underglaze
83. Utility
84. Miscellaneous

DIVISION 8 – FAIR THEME “Let the FAIR Times Roll”

This Division is for **ALL** entries for Fair Theme Award, both Professional and Amateur. Any media.

The winner of each class 85-86 will receive a Special Rosette and **Mattress Firm** will pay \$25, \$20 & \$15 for 1st, 2nd and 3rd in Professional and \$20, \$15 & \$10 for 1st, 2nd and 3rd in Amateur.

Class:

85. Fair Theme – Professional
86. Fair Theme - Amateur

AMATEUR DIVISIONS

“Amateur” in this Department refers to those who produce for their own pleasure, with no financial gain from their work. Judge’s recommendation to professional status may be followed at discretion of Superintendent of this Department.

Premiums: For Divisions 9 and 10 1 st - \$10 2 nd - \$8 3 rd - \$5 4 th – Ribbon
--

DIVISION 9

“KEEP IT ROLLING”

The winner of each class 87 – 91 will receive a Special Rosette and a \$15.00 award from **Mattress Firm**.

Class:

- 87. Bobble Head
- 88. Tractors
- 89. Fruits & Vegetables
- 90. Items Painted Into a Jukebox
- 91. Eggs!!

DIVISION 10

“CLASSICS”

The winner of each class 92 – 96 will receive a Special Rosette and a \$15.00 award from **Mattress Firm**.

Thelma’s Ceramics is sponsoring a “Busy Brush” award in the special division “Classics”. To take part entrants **MUST** enter all 7 classes. Points given for each placing: 1st = 3 pts, 2nd = 2 pts and 3rd = 1 pt. Entrant with the highest points will receive \$10.00.

Class:

- 92. Trucks
- 93. Christmas Trees 6” or Taller
- 94. Chip N Dip
- 95. Planter (No Plants, Live or Artificial)
- 96. Lamp (Traditional Wired)

DIVISION 11

PROMOTING CREATIVITY

A Special Rosette and Awards of \$20, \$15 and \$10 will be awarded by the **Idaho Ceramic Club**.

Class:

- 97. Wood Stock

Premiums: For Divisions 12 – 16 and 18, 19 1 st - \$10 2 nd - \$8 3 rd - \$5 4 th – Ribbon
--

DIVISION 12 – PORCELAIN

Entries must be fired at cone 4 or higher – Temp. 2161 – 2200

Class:

- 98. Glazed
- 99. Miscellaneous Porcelain
- 100. Doll – miscellaneous

DIVISION 13 – CERAMICS

Entries must be Earthenware clay, fired NO hotter than cone 02 – Temperature 2098 or lower.

Greenware Adaptation

Class:

- 101. Cut out, carve, clay lifting and sgraffito

Overglaze and Decals

- 102. Luster, gold, silver
- 103. Decal on ceramic
- 104. Decal on commercial ware

Glaze

- 105. Texture glaze
- 106. Crystal glaze
- 107. Gloss glaze
- 108. Pottery style or art glaze
- 109. Glaze and stain combination
- 110. Glaze with fired glass
- 111. Miscellaneous glaze

Underglaze

- 112. Airbrush
- 113. Brush work
- 114. Majolica
- 115. Applied pattern
- 116. Paper-cuts, Stencil, Screen print
- 117. Christmas
- 118. Halloween
- 119. Miscellaneous holiday or occasion
- 120. Miscellaneous underglaze

Non-Fired Media

- 121. Airbrushing
- 122. Drybrush
- 123. Applied pattern
- 124. Opaque stains
- 125. Pearls and metallics
- 126. Translucents, Paint Sticks and Pastels
- 127. Marbleized
- 128. Christmas
- 129. Halloween
- 130. Miscellaneous holiday or occasion
- 131. Mixed media (paper, napkin, etc.)

Purchased and Commercial Bisque

- 132. Glaze miscellaneous
- 133. Underglaze – utility item
- 134. Underglaze miscellaneous
- 135. Non-fired miscellaneous

DIVISION 14 – CHINA PAINTING

Framed pieces – frame and matt cannot exceed 2”

Class:

- 136. Naturalistic
- 137. Bird – Animal – Fish
- 138. Scene
- 139. Brush, line or pen work
- 140. Fruits, vegetables
- 141. Gold, silver or luster
- 142. Miniature – under 4” high and 6” in diameter
- 143. European style
- 144. Portraits
- 145. Local seminar/workshop piece
- 146. Miscellaneous NOT listed above
- 147. Holiday
- 148. Vase
- 149. Senior entry (age 65 and older) Miscellaneous
- 150. Youth entry (age 17 and younger) Miscellaneous

DIVISION 15 – CLAY WORK, POTTERY, RAKU & STONEWARE

Entries can be fired up to Cone 5 or higher – Up to temp 2205 plus

Clay Work and Pottery

Class:

- 151. Sculpture
- 152. Pinch
- 153. Coil
- 154. Slab
- 155. Clay puzzled
- 156. Wheel thrown 6" or under
- 157. Wheel thrown 7" or over
- 158. Wheel Miscellaneous
- 159. Miscellaneous Clay work
- 160. Miscellaneous Glaze

Raku

- 161. Wheel thrown
- 162. Hand modeled
- 163. Gloss glaze
- 164. Matte glaze
- 165. Matte & Gloss Combo
- 166. Horse hair raku
- 167. Slip resist, smoke or pit fired
- 168. Miscellaneous

Cast Stoneware

- 169. Glaze
- 170. Underglaze
- 171. Utility
- 172. Miscellaneous

DIVISION 16 – FIRED GLASS

This Division is for all fired glass entries, Professional and Amateur. Glass judging based on firing of piece. However, add-on decorations are welcome.

Class:

- 173. Sagged or slumped
- 174. Decorated sagged/slumped bottle
- 175. Fused
- 176. Fired paint design
- 177. Miniature – under 3"

Premiums: For Division 17

1st - \$15 2nd - \$12 3rd - \$10 4th – Ribbon

DIVISION 17 – SPECIAL DIVISION – ARMED FORCES

Entries made by members of the Armed Forces. We welcome all service members – Active or Veterans – to enter this special division. Best of Division will receive a rosette and a special award.

Class:

- 178. Glaze
- 179. Underglaze
- 180. Non-Fired media
- 181. Fantasy
- 182. Miscellaneous – Non-Fired
- 183. Miscellaneous - Glaze



DIVISION 18 – SENIORS

Seniors – 65 years of Age or Older, may compete in Senior or Amateur Division.

Class:

- 184. Glaze
- 185. Underglaze
- 186. Opaque stains
- 187. Dry brushed
- 188. Overglaze
- 189. Miscellaneous

DIVISION 19

MADE BY PERSONS WITH DISABILITIES

Award: The Western Idaho Fair will award a “Best of Division” Rosette where items are deemed worthy of merit. The intent of this Division is to encourage disabled exhibitors. The Ceramics Department will accept and categorize all items entered. **If the workmanship of an exhibit surpasses the intent of Division 19, the item will be reclassified to keep competition fair for the disabled exhibitor. All work must be done by the entrant.**

Class:

- 190. Glaze
- 191. Non-fired media
- 192. Miscellaneous

DIVISION 20 SUGAR BOWL

Professional

The Amalgamated Sugar Company LLC will award 1st place \$25 and 2nd place \$15 and 3rd place \$10

Class:

- 193. Sugar Bowl or Canister

Amateur

The Amalgamated Sugar Company LLC will award 1st place \$15 and 2nd place \$10 and 3rd place \$5.

Class:

- 194. Sugar Bowl or Canister

 **Amalgamated
Sugar**

MATTRESSFIRM

Wednesday, August 23 is Armed Forces Day at the Western Idaho Fair – all Armed Services Personnel and Veterans receive Free Admission.