



Department 20 FIRED ARTS Ceramics-Pottery-China-Glass

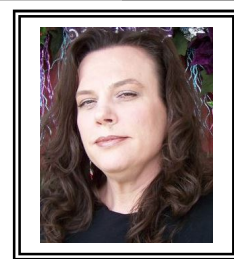
2025

Sunday	Monday	Tuesday	Wednesday	Thursday	Friday	Saturday
AUGUST	11 11:00-7:00 Entry Day – South Expo	12 11:00-7:00 Entry Day – South Expo	13 9:00 Judging	14	15 FAIR OPENS	16
17	18	19	20 Noon-8:00 Premium Payout	21 Noon-8:00 Premium Payout	22 Noon-8:00 Premium Payout	23 Noon-8:00 Premium Payout
24 Noon-8:00 Premium Payout 10:00 Fair Closes	25 10:00-7:00 All Items are released, Premium Payout	26 - Aug. 28 & Sept. 2-5 9:00-4:30 All Premium Payout	Enjoy the Fair: Noon – 10:00 Weekdays & Sunday; Noon – 11:00 Fridays & Saturdays Contact: 208-287-5663 or premiumoffice@idahofair.com			



SUPERINTENDENT:
Shaun McClurg – Boise, ID

**ASSISTANT
SUPERINTENDENT:**
Julie Soper – Boise, ID



Please Note:

See Department 19 for all Youth entries, age 17 & younger. Youth are welcome to enter Department 20 if they wish to compete with adults.

How to enter:

Bring in your entries with the entry form(s) to the Fairgrounds on **Monday, Aug. 11 or Tuesday, Aug. 12 from 11:00 a.m. to 7:00 p.m.** Entries will be taken in the South Expo Building. If you want to enter early and reduce time spent in line on entry days, you have the following 2 options:

1. a) Mail or deliver **ONLY** your **entry form(s)** to the Premium Office, 5610 Glenwood, Boise ID 83714 by **August 5.**
b) Then bring your **entries** to the Fairgrounds on **Aug. 11 or Aug. 12** from 11:00 a.m. to 7:00 p.m.
- OR 2.** a) Enter online by **Aug. 5** at www.idahofair.com. Follow the link to Competitive Exhibits. The Western Idaho Fair will cover the \$2 convenience fee. There will be no charge to enter online unless a professional fee applies.
b) Then bring your **entries** to the Fairgrounds on **Aug. 11 or Aug. 12** from 11:00 a.m. to 7:00 p.m.

1. Entries will be received in the **South Wing** of the Exposition Building. Entries must be made on forms supplied by The Western Idaho Fair. Only **one** article, **one pair** or **one set** in a class will be accepted from any one person. Entries cannot be larger than 18”X24” in either height or width. Each article must be the sole work of the entrant. Teachers may guide and advise only. Each piece must have been made entirely within the past year.
2. Check classes carefully. Pieces entered in the wrong class will not be considered in judging. It is your responsibility to enter in the correct class. Help will be available on entry days. Entries will be displayed as deemed appropriate by the superintendent.
3. **JUDGING:** Wednesday, Aug. 13 – 9:00 a.m. This area will be closed during judging. Premiums will be awarded only on classes here listed. The Judges will not award premiums unless the articles are deemed worthy of merit. The Judges may award first, second or no premium according to their judgment. **Judges’ decisions are final.**
4. **PREMIUM PAY-OUT:** Awards will be available at the Premium Office. Copy of Exhibitor Number Form should be presented for Premium pay-out. Cash premiums will be paid to those entitled to awards on Aug. 20 through Aug. 24 from

- 12 Noon to 8:00 p.m. and on Exhibit Release day, Monday, Aug. 25 from 10:00 a.m. to 7:00 p.m. Starting Aug. 26 through Sept. 5, awards will be given out from 9:00 a.m. to 4:30 p.m. daily. The Office will be closed for Labor Day weekend, including the Friday prior to Labor Day. **Awards not claimed by Sept. 5, 2025,** will be considered a donation and will revert back to The Western Idaho Fair general fund.
5. **RELEASE:** Monday, Aug. 25 – 10:00 a.m. to 7:00 p.m. **In no case may exhibits be removed before 10:00 a.m. Monday, Aug. 25.** Exhibits which are not claimed within one week after the close of the Fair will be considered to have been abandoned and will be disposed of as the Manager of the Fair sees fit.
Exhibitor must present claim checks corresponding with entry tags when claiming exhibits. Exhibits must not be removed without the Superintendent or assistants being present to check out entries.
6. **ADDITIONAL RULES:** Exhibitors are requested to read the General Rules in the front of this Premium Book. Special Department Rules supersede General Rules.

7. **Articles exhibited at The Western Idaho Fair in previous years will not be eligible for competition.**
All articles must have been **fired** in a ceramic or glass kiln. **No plaster entries please.**
Purchased Bisque, cleaned & fired before purchased, will be judged on detail only.
Lamps will not be lighted. Entries in shadow boxes, mangers, etc. will be judged on entry only. No shade on lamps. Felt will be permitted on bottoms of bookends and chess pieces that are weighted.
We recommend that hot glue not be used on entries. Hot glue relaxes at 80 degrees.
8. **NO** article will be accepted that is cracked, chipped, or mended, unless entered into the "OOP" class
9. An exhibitor who has once competed as professional in a division may not reclassify himself and enter competition again as an amateur in the same division.
10. All exhibits will be under the control and direction of the Superintendent but **in no case will the Manager of The Western Idaho Fair or the Superintendent be responsible for the loss or damage of any entry**, although every precaution will be taken to ensure the safety of these exhibits.
11. Entries cannot contain more than 10% of non-fired media. Examples: Crystals, buttons, pompoms or any other craft item.

SPECIAL AWARDS

Theme Award: The Western Idaho Fair will award a plaque for the Exhibit that best portrays the Fair Theme "**Cake, Cattle & Roll**".

Award will be chosen from all entries in Div. 8.

Best of Division Award: The Western Idaho Fair will award a plaque for the best of each division (Best of Divisions 4 – 7 and 12 – 19). Winners will receive in each group classification – first, second, third and fourth place ribbons. In addition, **The Amalgamated Sugar Company LLC** will award \$15 to the Best of Division 4 – 7 winners and \$8.00 to the Best of Division 12 – 19 winners.

People's Choice of the Day: Fair visitors may vote for an entry in this department, either professional or amateur, to receive a popularity award. All entries are eligible except for those that have already received the award. Votes will be counted each day. The entry receiving the most votes each day will receive \$10 and a ribbon.

Judge's Choice: The Western Idaho Fair will present four awards, one to be chosen by each Judge. The winners will be chosen from either the Professional or Amateur Division. Each will receive a cash award of \$15.

Special Division: **Mattress Firm** will award additional premiums for each class winner in Divisions 1, 2, 8, 9 and 10.

Unique Creativity Award: **The Idaho Ceramic Club** of Boise, Idaho will present a Special Award Plaque to both the Professional and Amateur Divisions.

Shaun McClurg will present a trophy for "**Superintendent's Choice**" for both Professional and Amateur.

Julie Soper will present a trophy for "**Creative Excellence**" in Ceramics for both Professional and Amateur.

Thelma's Ceramics – Boise, will present a Trophy for Most Outstanding Raku in Professional and Amateur and a Trophy for Best of Underglaze in Professional and Amateur.

Funny Farm – Meridian, will present a Trophy for Most Humorous Overall in Professional and Amateur.

Home Treasures – Caldwell, will present an award for Best of Holiday in Professional and Amateur and an award for Excellence in Porcelain in Professional and Amateur.

Western Idaho Ceramic Club will present a Trophy for Best of Creative Greenware Adaptation in Professional and Amateur.

Southwest Idaho China Painters will present an award for Best original design on a unique piece (China Painting) in Professional and Amateur.

Cat n' Canary – Nampa, will present an award for Best Stoneware, Amateur and Professional and an award for Creativity in Acrylics Amateur and Professional.

Crazy House Glass and Ceramics – award for "Craziest Clay Creation" amateur and professional and an award for "Most Imaginative Glass"

Backdoor Ceramics will present an award for "Excellence in Glazes" in Amateur and Professional.

Flaming Earth Studio will present an award and \$30 for Professional, as well as an award and \$20 for Amateur in "Excellence in Glaze on a hand-built piece".

Shaun McClurg will present awards in "Best of Non-Fired-Veterans, Best of Fired-Veterans and Creativity-Veterans".

Muddy Buddies will present an award for "Excellence in Clay Work & Pottery: Pinch Pot Class" in Professional and Amateur.

Stray Cat Studio will present an award for "Most Creative in Clay Texture" in Professional and Amateur.

Ceramics Unique will present an award for "Unusual and Different Birdhouse" in Professional and Amateur.

SPECIAL GIFT CERTIFICATES

Potters Center – Boise: \$20 Gift Certificate in Professional and Amateur.

Additional Awards may be offered. They will be posted in the Department.



PROFESSIONAL DIVISIONS

An entry fee of \$2.00 per item will be charged in the Professional Division. **“Professional”** in this department refers to those whose productions are offered for sale and those who now or have in the past taught any technique included in the division they enter.

Premiums: For Divisions 1 and 2
1st - \$20 2nd - \$15 3rd - \$10 4th - Ribbon

DIVISION 1 “CERAMIC PAST”

The winner of each class 1 – 5 will receive a Special Rosette and a \$20 award from **Mattress Firm**.

Class:

1. Masks
2. Slip Cast Basket
3. Vintage Bathroom Plaques
4. 3 Kings from a Nativity
5. Vintage Arnel Mushroom Piece

DIVISION 2 “IT’S IN THE TECHNIQUE”

The winner of each class 6 – 10 will receive a Special Rosette and a \$20 award from **Mattress Firm**.

Thelma’s Ceramics is sponsoring a “Busy Brush” award in the special division “Classics”. To take part entrants **MUST** enter all 5 classes. Points given for each placing: 1st = 3 pts, 2nd = 2 pts and 3rd = 1 pt. Entrant with the highest points will receive \$20.00.

Class:

6. Marbelizing/Shaving Cream/Hydro Drip
7. Clay Puzzling
8. Rubber Stamping
9. Clay Lifting
10. Underglaze Decal Transfer

DIVISION 3 PROMOTING CREATIVITY

A Special Rosette and Awards of \$35, \$20, and \$15 will be awarded by the **Idaho Ceramic Club**

Class:

11. Cow

Premiums: For Divisions 4 thru 7
1st - \$20 2nd - \$15 3rd - \$10 4th - Ribbon

DIVISION 4 – PORCELAIN

Entries must be fired at cone 4 or higher – Temp. 2161 – 2200

Class:

12. Glazed
13. Miscellaneous Porcelain
14. Doll – miscellaneous

DIVISION 5 – CERAMICS

Entries must be Earthenware clay, fired NO hotter than cone 02 – Temperature 2098 or lower.

Greenware Adaptation

Class:

15. Cut out, carve, clay lift and sgraffito

Overglaze and Decals

16. Luster, gold, silver
17. Decal on ceramic
18. Decal on commercial ware

Glaze

19. Texture glaze
20. Crystal glaze
21. Gloss glaze
22. Pottery style or art glaze
23. Glaze and stain combination
24. Glaze with fired glass
25. Miscellaneous glaze

Underglaze

26. Airbrush
27. Brush work
28. Majolica
29. Applied pattern
30. Misc. Underglaze
31. Paper-cuts, Stencil, Screen print
32. Christmas
33. Halloween
34. Miscellaneous holiday or occasion

Non-Fired Media

35. Airbrushing
36. Drybrush
37. Applied pattern
38. Opaque stains
39. Pearls and metallics
40. Translucents, Paint Sticks and Pastels
41. Marbleized
42. Mixed media (paper, napkin, etc.)
43. Christmas
44. Halloween
45. Miscellaneous holiday or occasion

Purchased and Commercial Bisque

46. Glaze miscellaneous
47. Underglaze – utility item
48. Underglaze Miscellaneous
49. Non-fired miscellaneous

OOPS Accidents Happen

50. Fired
51. Non-Fired

DIVISION 6 – CHINA PAINTING

Framed pieces – frame and matt cannot exceed 2”

Class:

52. Naturalistic
53. Bird – Animal – Fish
54. Scene
55. Brush, line, or pen work
56. Fruits, vegetables
57. Gold, silver, or luster
58. Miniature – under 4” high and 6” in diameter
59. Miscellaneous NOT listed above
60. Holiday
61. Vase

DIVISION 7 – CLAY WORK, POTTERY, RAKU & STONEWARE

Entries can be Fired up to Cone 5 or temp 2205

Clay Work and Pottery

Class:

62. Sculpture
63. Pinch
64. Coil
65. Slab
66. Clay puzzled

67. Wheel thrown 6" or under
68. Wheel thrown 7" or over
69. Wheel miscellaneous
70. Miscellaneous clay work
71. Miscellaneous Glaze

Raku

72. Wheel thrown
73. Hand built
74. Gloss glaze (Slip Cast Only)
75. Matte glaze (Slip Cast Only)
76. Matte & Gloss Combo (Wheel, Hand Built or Slip Cast)
77. Horse Hair (Wheel, Hand Built or Slip Cast)
78. Miscellaneous (Wheel, Hand Built or Slip Cast)

Stoneware

79. Commercial Bisque
80. Glaze
81. Underglaze
82. Utility
83. Miscellaneous

DIVISION 8 – FAIR THEME

“Cake, Cattle & Roll”

This Division is for **ALL** entries for Fair Theme Award, both Professional and Amateur. **FIRE to ANY MEDIA.**

The winner of each class 84-85 will receive a Special Rosette and **Mattress Firm** will pay \$25, \$20 & \$15 for 1st, 2nd and 3rd in Professional and \$20, \$15 & \$10 for 1st, 2nd and 3rd in Amateur.

Class:

84. Fair Theme – Professional
85. Fair Theme - Amateur

AMATEUR DIVISIONS

“**Amateur**” in this Department refers to those who produce for their own pleasure, with no financial gain from their work. Judge’s recommendation to professional status may be followed at discretion of Superintendent of this Department.

Premiums: For Divisions 9 and 10
1st - \$10 2nd - \$8 3rd - \$5 4th – Ribbon

DIVISION 9

“CERAMIC PAST”

The winner of each class 86 – 90 will receive a Special Rosette and a \$15.00 award from **Mattress Firm**.

Class:

86. Masks
87. Slip Cast Basket
88. Vintage Bathroom Plaque
89. 3 Kings from a Nativity
90. Vintage Arnel Mushroom Piece

DIVISION 10

“IT’S IN THE TECHNIQUE”

The winner of each class 91 – 95 will receive a Special Rosette and a \$15.00 award from **Mattress Firm**.

Thelma’s Ceramics is sponsoring a “Busy Brush” award in the special division “Classics”. To take part entrants **MUST** enter all 7 classes. Points given for each placing: 1st = 3 pts, 2nd = 2 pts and 3rd = 1 pt. Entrant with the highest points will receive \$10.00.

Class:

91. Marbelizing/Shaving Cream/Hydro Dip
92. Clay Puzzling
93. Rubber Stamping

94. Clay Lifting
95. Underglaze Decal Transfer

DIVISION 11 PROMOTING CREATIVITY

A Special Rosette and Awards of \$20, \$15 and \$10 will be awarded by the **Idaho Ceramic Club**.

Class:

96. Cow

Premiums: For Divisions 12 – 15 and 18, 19
1st - \$10 2nd - \$8 3rd - \$5 4th – Ribbon

DIVISION 12 – PORCELAIN

Entries must be fired at cone 4 or higher – Temp. 2161 – 2200

Class:

97. Glazed
98. Miscellaneous Porcelain
99. Doll – miscellaneous

DIVISION 13 – CERAMICS

Entries must be Earthenware clay, fired NO hotter than cone 02 – Temperature 2098 or lower.

Greenware Adaptation

Class:

100. Cut out, carve, clay lifting and sgraffito

Overglaze and Decals

101. Luster, gold, silver
102. Decal on ceramic
103. Decal on commercial ware

Glaze

104. Texture glaze
105. Crystal glaze
106. Gloss glaze
107. Pottery style or art glaze
108. Glaze and stain combination
109. Glaze with fired glass
110. Miscellaneous glaze

Underglaze

111. Airbrush
112. Brush work
113. Majolica
114. Applied pattern
115. Paper-cuts, Stencil, Screen print
116. Christmas
117. Halloween
118. Miscellaneous holiday or occasion
119. Miscellaneous underglaze

Non-Fired Media

120. Airbrushing
121. Drybrush
122. Applied pattern
123. Opaque stains
124. Pearls and metallics
125. Translucents, Paint Sticks and Pastels
126. Marbleized
127. Christmas
128. Halloween
129. Miscellaneous holiday or occasion
130. Mixed media (paper, napkin, etc.)

Purchased and Commercial Bisque

131. Glaze miscellaneous
132. Underglaze – utility item
133. Underglaze miscellaneous

134. Non-fired miscellaneous

OOPS Accidents Happen

135. Fired

136. Non-Fired

DIVISION 14 – CHINA PAINTING

Framed pieces – frame and matt cannot exceed 2”

Class:

137. Naturalistic

138. Bird – Animal – Fish

139. Scene

140. Brush, line or pen work

141. Fruits, vegetables

142. Gold, silver or luster

143. Miniature – under 4” high and 6” in diameter

144. Miscellaneous NOT listed above

145. Holiday

146. Vase

147. Senior entry (age 65 and older) Miscellaneous

148. Youth entry (age 17 and younger) Miscellaneous

DIVISION 15 – CLAY WORK, POTTERY, RAKU & STONEWARE

Entries can be fired up to Cone 5 or temp 2205

Clay Work and Pottery

Class:

149. Sculpture

150. Pinch

151. Coil

152. Slab

153. Clay puzzled

154. Wheel thrown 6” or under

155. Wheel thrown 7” or over

156. Wheel Miscellaneous

157. Miscellaneous Clay work

158. Miscellaneous Glaze

Raku

159. Wheel thrown

160. Hand built

161. Gloss glaze (Slip Cast Only)

162. Matte glaze (Slip Cast Only)

163. Matte & Gloss Combo (Wheel, Hand Built or Slip Cast)

164. Horse Hair (Wheel, Hand Built or Slip Cast)

165. Miscellaneous (Wheel, Hand Built or Slip Cast)

Stoneware

166. Commercial Bisque

167. Glaze

168. Underglaze

169. Utility

170. Miscellaneous

DIVISION 16 – FIRED GLASS

This Division is for all fired glass entries, Professional and Amateur. Glass judging based on firing of piece. However, add-on decorations are welcome. Entries must be fired to Cone 020 or 1159 temp or higher.

Premiums: For Divisions 16

Professional: 1st - \$20 2nd - \$15 3rd - \$10 4th – Ribbon

Amateur: 1st - \$10 2nd - \$8 3rd - \$5 4th – Ribbon

Professional

Class:

171. Sagged or Slumped Glass

172. Non-Fired Decoration on Sagged or Slumped Glass

173. Fused Glass

174. Fired Mixed Media on Glass

175. Jewelry

Amateur

Class:

176. Sagged or Slumped Glass

177. Non-fired Decoration on Sagged or Slumped Glass

178. Fused Glass

179. Fired Mixed Media on Glass

180. Jewelry

Premiums: For Division 17

1st - \$15 2nd - \$12 3rd - \$10 4th – Ribbon

DIVISION 17 – SPECIAL DIVISION – ARMED FORCES

Entries made by members of the Armed Forces. We welcome all service members – Active or Veterans – to enter this special division. Best of Division will receive a rosette and a special award.

Class:

181. Glaze

182. Underglaze

183. Non-Fired media

184. Fantasy

185. Miscellaneous – Non-Fired

186. Miscellaneous - Glaze



DIVISION 18 – SENIORS

Seniors – 65 years of Age or Older, may compete in Senior or Amateur Division.

Class:

187. Crystal Glaze

188. Underglaze

189. Opaque stains

190. Holiday

191. Mixed Media

DIVISION 19

MADE BY PERSONS WITH DISABILITIES

Award: The Western Idaho Fair will award a “Best of Division” Rosette where items are deemed worthy of merit. The intent of this Division is to encourage disabled exhibitors. The Ceramics Department will accept and categorize all items entered. **If the workmanship of an exhibit surpasses the intent of Division 19, the item will be reclassified to keep competition fair for the disabled exhibitor. All work must be done by the entrant.**

Class:

192. Glaze

193. Non-fired media

DIVISION 20 – “DESIGN YOUR OWN” SANTA PLATE

This Division is for all entries both Professional and Amateur.

ALL FIRED MEDIA

Professional

The Amalgamated Sugar Company LLC will award 1st place \$25 and 2nd place \$15 and 3rd place \$10

Class:

194. “Design Your Own” Santa Plate

Amateur

The Amalgamated Sugar Company LLC will award 1st place \$15 and 2nd place \$10 and 3rd place \$5.

Class:

195. “Design Your Own” Santa Plate