



Department 20 FIRED ARTS Ceramics-Pottery-China-Glass

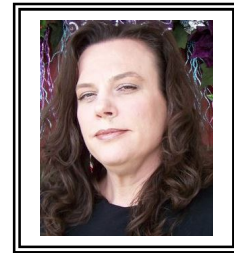
2026

Sunday	Monday	Tuesday	Wednesday	Thursday	Friday	Saturday
AUGUST	17 11:00-7:00 Entry Day – South Expo	18 11:00-7:00 Entry Day – South Expo	19 9:00 Judging	20	21 FAIR OPENS	22
23	24	25	26 Noon-8:00 Premium Payout	27 Noon-8:00 Premium Payout	28 Noon-8:00 Premium Payout	29 Noon-8:00 Premium Payout
30 Noon-8:00 Premium Payout 10:00 Fair Closes	31 10:00-7:00 All Items are released, Premium Payout	Sept 1 – 11 9:00-4:30 All Premium Payout Closed Sept 4-7	Enjoy the Fair: Noon – 10:00 Weekdays & Sunday; Noon – 11:00 Fridays & Saturdays Contact: 208-287-5663 or premiumoffice@idahofair.com			



SUPERINTENDENT:
Shaun McClurg – Boise, ID

ASSISTANT SUPERINTENDENT:
Julie Soper – Boise, ID



Please Note:

See Department 19 for all Youth entries, age 17 & younger. Youth are welcome to enter Department 20 if they wish to compete with adults.

How to enter:

Bring in your entries with the entry form(s) to the Fairgrounds on **Monday, Aug. 17 or Tuesday, Aug. 18 from 11:00 a.m. to 7:00 p.m.** Entries will be taken in the South Expo Building. If you want to enter early and reduce time spent in line on entry days, you have the following 2 options:

1. **a)** Mail or deliver **ONLY** your **entry form(s)** to the Premium Office, 5610 Glenwood, Boise ID 83714 by **August 10.**
b) Then bring your **entries** to the Fairgrounds on **Aug. 17 or Aug. 18** from 11:00 a.m. to 7:00 p.m.
- OR 2. a)** Enter online by **Aug. 10** at www.idahofair.com. Follow the link to Competitive Exhibits. The Western Idaho Fair will cover the \$2 convenience fee. There will be no charge to enter online unless a professional fee applies.
b) Then bring your **entries** to the Fairgrounds on **Aug. 17 or Aug. 18** from 11:00 a.m. to 7:00 p.m.

1. Entries will be received in the **South Wing** of the Exposition Building. Entries must be made on forms supplied by The Western Idaho Fair. Only **one** article, **one pair** or **one set** in a class will be accepted from any one person. Entries cannot be larger than 18”X24” in either height or width. Each article must be the sole work of the entrant. Teachers may guide and advise only. Each piece must have been made entirely within the past year.
2. Check classes carefully. Pieces entered in the wrong class will not be considered in judging. It is your responsibility to enter in the correct class. Help will be available on entry days. Entries will be displayed as deemed appropriate by the superintendent.
3. **JUDGING:** Wednesday, Aug. 19 – 9:00 a.m. This area will be closed during judging. Premiums will be awarded only on classes here listed. The Judges will not award premiums unless the articles are deemed worthy of merit. The Judges may award first, second or no premium according to their judgment. **Judges’ decisions are final.**
4. **PREMIUM PAY-OUT:** Awards will be available at the Premium Office. Copy of Exhibitor Number Form should be presented for Premium pay-out. Cash premiums will be paid to those entitled to awards on Aug. 26 through Aug. 30 from

- 12 Noon to 8:00 p.m. and on Exhibit Release day, Monday, Aug. 31 from 10:00 a.m. to 7:00 p.m. Starting Sept. 1 through Sept. 11, awards will be given out from 9:00 a.m. to 4:30 p.m. daily. The Office will be closed for Labor Day weekend, including the Friday prior to Labor Day. **Awards not claimed by Sept. 11, 2026,** will be considered a donation and will revert back to The Western Idaho Fair general fund.
5. **RELEASE:** Monday, Aug. 31 – 10:00 a.m. to 7:00 p.m. **In no case may exhibits be removed before 10:00 a.m. Monday, Aug. 31.** Exhibits which are not claimed within one week after the close of the Fair will be considered to have been abandoned and will be disposed of as the Manager of the Fair sees fit.
Exhibitor must present claim checks corresponding with entry tags when claiming exhibits. Exhibits must not be removed without the Superintendent or assistants being present to check out entries.
6. **ADDITIONAL RULES:** Exhibitors are requested to read the General Rules in the front of this Premium Book. Special Department Rules supersede General Rules.

7. **Articles exhibited at The Western Idaho Fair in previous years will not be eligible for competition.**
All articles must have been **fired** in a ceramic or glass kiln. **No plaster entries please.**
Purchased Bisque, cleaned & fired before purchased, will be judged on detail only.
Lamps will not be lighted. Entries in shadow boxes, mangers, etc. will be judged on entry only. No shade on lamps. Felt will be permitted on bottoms of bookends and chess pieces that are weighted.
We recommend that hot glue not be used on entries. Hot glue relaxes at 80 degrees.
8. **NO** article will be accepted that is cracked, chipped, or mended, unless entered into the “OOP” class
9. An exhibitor who has once competed as professional in a division may not reclassify himself and enter competition again as an amateur in the same division.
10. All exhibits will be under the control and direction of the Superintendent but **in no case will the Manager of The Western Idaho Fair or the Superintendent be responsible for the loss or damage of any entry**, although every precaution will be taken to ensure the safety of these exhibits.
11. Entries cannot contain more than 10% of non-fired media. Examples: Crystals, buttons, pompoms or any other craft item.

SPECIAL AWARDS

Theme Award: The Western Idaho Fair will award a plaque for the Exhibit that best portrays the Fair Theme “**Bright Lights & Fair Nights**”.

Award will be chosen from all entries in Div. 9.

Best of Division Award: The Western Idaho Fair will award a plaque for the best of each division (Best of Divisions 4 – 8 and 13 – 22). Winners will receive in each group classification – first, second, third and fourth place ribbons. In addition, **D&B Supply** will award \$15 to the Best of Division 4 – 8 winners and \$8.00 to the Best of Division 13 – 22 winners.

People’s Choice of the Day: Fair visitors may vote for an entry in this department, either professional or amateur, to receive a popularity award. All entries are eligible except for those that have already received the award. Votes will be counted each day. The entry receiving the most votes each day will receive \$10 and a ribbon.

Judge’s Choice: The Western Idaho Fair will present four awards, one to be chosen by each Judge. The winners will be chosen from either the Professional or Amateur Division. Each will receive a cash award of \$15.

Special Division: Mattress Firm will award additional premiums for each class winner in Divisions 1, 2, 9, 10 and 11.

Unique Creativity Award: The Idaho Ceramic Club of Boise, Idaho will present a Special Award Plaque to both the Professional and Amateur Divisions.

Shaun McClurg will present a trophy for “**Superintendent’s Choice**” for both Professional and Amateur.

Julie Soper will present a trophy for “**Creative Excellence**” in Ceramics for both Professional and Amateur.

Thelma’s Ceramics – Boise, will present a Trophy for Most Outstanding Raku in Professional and Amateur and a Trophy for Best of Underglaze in Professional and Amateur.

Funny Farm – Meridian, will present a Trophy for Most Humorous Overall in Professional and Amateur.

Home Treasures – Caldwell, will present an award for Best of Holiday in Professional and Amateur and an award for Excellence in Porcelain in Professional and Amateur.

Western Idaho Ceramic Club will present a Trophy for Best of Creative Greenware Adaptation in Professional and Amateur.

Southwest Idaho China Painters will present an award for Best original design on a unique piece (China Painting) in Professional and Amateur.

Cat n’ Canary – Nampa, will present an award for Best Stoneware, Amateur and Professional and an award for Creativity in Acrylics Amateur and Professional.

Crazy House Glass and Ceramics – award for “Craziest Clay Creation” amateur and professional and an award for “Most Imaginative Glass”

Backdoor Ceramics will present an award for “Excellence in Glazes” in Amateur and Professional.

Flaming Earth Studio will present an award and \$30 for Professional, as well as an award and \$20 for Amateur in “Excellence in Glaze on a hand-built piece”.

Shaun McClurg will present awards in “Best of Non-Fired-Veterans, Best of Fired-Veterans and Creativity-Veterans”.

Muddy Buddies will present an award for “Excellence in Clay Work & Pottery: Pinch Pot Class” in Professional and Amateur.

Stray Cat Studio will present an award for “Most Creative in Clay Texture” in Professional and Amateur.

Ceramics Unique will present an award for “Unusual and Different Birdhouse” in Professional and Amateur.

SPECIAL GIFT CERTIFICATES

Potters Center – Boise: \$20 Gift Certificate in Professional and Amateur.

Additional Awards may be offered. They will be posted in the Department.



Please Note:

In 2027 The Western Idaho Fair will move their starting date from the 3rd Friday in August to the 2nd Friday and from 2028 on it will open on the 1st Friday of August. In addition, it will add a 3rd weekend.

2027 – August 13 – 29
2028 – August 4 – 20
2029 – August 3 – 19

PROFESSIONAL DIVISIONS

An entry fee of \$2.00 per item will be charged in the Professional Division. “Professional” in this department refers to those whose productions are offered for sale and those who now or have in the past taught any technique included in the division they enter.

Premiums: For Divisions 1 and 2
1st - \$20 2nd - \$15 3rd - \$10 4th - Ribbon

DIVISION 1 “CERAMIC PAST”

The winner of each class 1 – 5 will receive a Special Rosette and a \$20 award from **Mattress Firm**.

Class:

1. Seed Packets
2. Calendar Bears
3. Stein
4. Student Mold Ornament
5. 3 Nativity Camels

DIVISION 2 “IT’S IN THE TECHNIQUE”

The winner of each class 6 – 10 will receive a Special Rosette and a \$20 award from **Mattress Firm**.

Thelma’s Ceramics is sponsoring a “Busy Brush” award in the special division “Classics”. To take part entrants **MUST** enter all 5 classes. Points given for each placing: 1st = 3 pts, 2nd = 2 pts and 3rd = 1 pt. Entrant with the highest points will receive \$20.00.

Class:

6. Jade
7. Hand Built Butterdish
8. Carved Pattern with an Underglaze Inlay
9. Airbrush Vase
10. Watercolor Paints on Ceramic

DIVISION 3 PROMOTING CREATIVITY

A Special Rosette and Awards of \$35, \$20, and \$15 will be awarded by the **Idaho Ceramic Club**

Class:

11. Lighted Scene

Premiums: For Divisions 4 thru 8
1st - \$20 2nd - \$15 3rd - \$10 4th - Ribbon

DIVISION 4 – PORCELAIN

Entries must be fired at cone 4 or higher – Temp. 2161 – 2200

Class:

12. Glazed
13. Miscellaneous Porcelain
14. Doll – Miscellaneous

DIVISION 5 – EARTHENWARE

Entries in this division must be Earthenware clay, and fired NO hotter than cone 02 – Temperature 2098 or lower.

Greenware Adaptation

Class:

15. Cut Out, Carve, Clay Lift and Sgraffito

Overglaze and Decals

16. Luster, Gold, Silver
17. Fired Decal on Ceramic
18. Non-Fired Decal on Ceramic

19. Fired Decal on Commercial Ware
20. Non-Fired Decal on Commercial Ware

Glaze

21. Texture Glaze
22. Crystal Glaze
23. Gloss Glaze
24. Pottery Style or Art Glaze
25. Glaze and Stain Combination
26. Glaze with Fired Glass
27. Miscellaneous Glaze

Underglaze

28. Airbrush
29. Brush work
30. Majolica
31. Applied Pattern
32. Paper-Cuts, Stencil, Screen print
33. Christmas
34. Halloween
35. Miscellaneous Holiday or Occasion
36. Miscellaneous Underglaze

Non-Fired Media

37. Airbrush
38. Drybrush
39. Applied Pattern
40. Opaque Stains
41. Pearls and Metallics
42. Transluents, Paint Sticks and Pastels
43. Marbleized
44. Christmas
45. Halloween
46. Miscellaneous Holiday or Occasion
47. Mixed Media (paper, napkin, hot glue, etc.)

Purchased and Commercial Bisque

48. Glaze Miscellaneous
49. Underglaze – Utility Item
50. Underglaze Miscellaneous
51. Non-fired Miscellaneous

OOPS Accidents Happen

52. Fired
53. Non-Fired

DIVISION 6 – HIGH FIRED CLAY

Entries must be fired to Cone 10 – Temp. 2380 F

Class:

54. Fired Media
55. Non-Fired Media
56. Clay Adaption

DIVISION 7 – CHINA PAINTING

Framed pieces – frame and matt cannot exceed 2”

Class:

57. Naturalistic
58. Bird – Animal – Fish
59. Scene
60. Brush, Line, or Pen Work
61. Fruits, Vegetables
62. Gold, Silver, or Luster
63. Miniature – Under 4” high and 6” in diameter
64. Miscellaneous NOT listed above
65. Holiday
66. Vase

**DIVISION 8 – CLAY WORK, POTTERY,
RAKU & STONEWARE**

Entries fired up to Cone 5 or temp 2205

Clay Work and Pottery

Class:

67. Sculpture
68. Pinch
69. Coil
70. Slab
71. Clay Puzzled
72. Wheel Thrown 5” or Under
73. Wheel Thrown 6” or Over
74. Wheel Miscellaneous
75. Miscellaneous Clay Work
76. Miscellaneous Glaze
77. Cut Out, Carved, Clay Lift, and Sgraffito

Raku

78. Wheel Thrown
79. Hand Built
80. Gloss Glaze (Slip Cast Only)
81. Gloss Glaze (Wheel or Hand Built)
82. Matte Glaze (Slip Cast Only)
83. Matte Glaze (Wheel or Hand Built)
84. Matte & Gloss Combo (Wheel, Hand Built or Slip Cast)
85. Horse Hair (Wheel, Hand Built or Slip Cast)
86. Miscellaneous (Wheel, Hand Built or Slip Cast)

Stoneware & Stoneware Commercial Bisque

87. Crystal Glaze
88. Glaze
89. Underglaze
90. Utility
91. Miscellaneous

**DIVISION 9 – FAIR THEME
“Bright Lights & Fair Nights”**

This Division is for **ALL** entries for Fair Theme Award, both Professional and Amateur. **FIRED to ANY MEDIA.**

The winner of each class 92-93 will receive a Special Rosette and **Mattress Firm** will pay \$25, \$20 & \$15 for 1st, 2nd and 3rd in Professional and \$20, \$15 & \$10 for 1st, 2nd and 3rd in Amateur.

Class:

92. Fair Theme – Professional
93. Fair Theme - Amateur

AMATEUR DIVISIONS

“Amateur” in this Department refers to those who produce for their own pleasure, with no financial gain from their work. Judge’s recommendation to professional status may be followed at discretion of Superintendent of this Department.

Premiums: For Divisions 10 and 11
1st - \$10 2nd - \$8 3rd - \$5 4th - Ribbon

**DIVISION 10
“CERAMIC PAST”**

The winner of each class 94 – 98 will receive a Special Rosette and a \$15.00 award from **Mattress Firm.**

Class:

94. Seed Packets
95. Calendar Bears
96. Stein
97. Student Mold Ornaments
98. 3 Nativity Camels

**DIVISION 11
“IT’S IN THE TECHNIQUE”**

The winner of each class 99 – 103 will receive a Special Rosette and a \$15.00 award from **Mattress Firm.**

Thelma’s Ceramics is sponsoring a “Busy Brush” award in the special division “Classics”. To take part entrants **MUST** enter all 7 classes. Points given for each placing: 1st = 3 pts, 2nd = 2 pts and 3rd = 1 pt. Entrant with the highest points will receive \$10.00.

Class:

99. Jade
100. Hand Built Butterdish
101. Carved Pattern with an Underglaze Inlay
102. Airbrush Vase
103. Watercolor Paints on Ceramic

**DIVISION 12
PROMOTING CREATIVITY**

A Special Rosette and Awards of \$20, \$15 and \$10 will be awarded by the **Idaho Ceramic Club.**

Class:

104. Lighted Scene

Premiums: For Divisions 13 – 17 and 20 – 22
1st - \$10 2nd - \$8 3rd - \$5 4th - Ribbon

DIVISION 13 – PORCELAIN

Entries must be fired at cone 4 or higher – Temp. 2161 – 2200

Class:

105. Glazed
106. Miscellaneous Porcelain
107. Doll – Miscellaneous

DIVISION 14 – EARTHENWARE

Entries in this division must be Earthenware Clay, fired NO hotter than cone 02 – Temperature 2098 or lower.

Greenware Adaptation

Class:

108. Cut Out, Carve, Clay Lifting and Sgraffito

Overglaze and Decals

109. Luster, Gold, Silver
110. Fired Decal on Ceramic
111. Non-Fired Decal on Ceramic

- 112. Fired Decal on Commercial Ware
- 113. Non-Fired Decal on Commercial Ware

Glaze

- 114. Texture Glaze
- 115. Crystal Glaze
- 116. Gloss Glaze
- 117. Pottery Style or Art Glaze
- 118. Glaze and Stain Combination
- 119. Glaze with Fired Glass
- 120. Miscellaneous Glaze

Underglaze

- 121. Airbrush
- 122. Brush Work
- 123. Majolica
- 124. Applied Pattern
- 125. Paper-Cuts, Stencil, Screen print
- 126. Christmas
- 127. Halloween
- 128. Miscellaneous Holiday or Occasion
- 129. Miscellaneous Underglaze

Non-Fired Media

- 130. Airbrush
- 131. Drybrush
- 132. Applied Pattern
- 133. Opaque Stains
- 134. Pearls and Metallics
- 135. Transluents, Paint Sticks and Pastels
- 136. Marbleized
- 137. Christmas
- 138. Halloween
- 139. Miscellaneous Holiday or Occasion
- 140. Mixed Media (paper, napkin, hot glue, etc.)

Purchased and Commercial Bisque

- 141. Glaze Miscellaneous
- 142. Underglaze – Utility Item
- 143. Underglaze Miscellaneous
- 144. Non-Fired Miscellaneous

OOPS Accidents Happen

- 145. Fired
- 146. Non-Fired

DIVISION 15 – HIGH FIRED CLAY

Entries must be fired to Cone 10 – Temp. 2380 F

Class:

- 147. Fired Media
- 148. Non-Fired Media
- 149. Clay Adaption

DIVISION 16 – CHINA PAINTING

Framed pieces – frame and matt cannot exceed 2”

Class:

- 150. Naturalistic
- 151. Bird – Animal – Fish
- 152. Scene
- 153. Brush, Line or Pen Work
- 154. Fruits, Vegetables
- 155. Gold, Silver or Luster
- 156. Miniature – Under 4” high and 6” in diameter
- 157. Miscellaneous NOT listed above
- 158. Holiday
- 159. Vase
- 160. Senior Entry (age 65 and older) Miscellaneous
- 161. Youth Entry (age 17 and younger) Miscellaneous

**DIVISION 17 – CLAY WORK, POTTERY,
RAKU & STONEWARE**

Entries fired up to Cone 5 or temp 2205

Clay Work and Pottery

Class:

- 162. Sculpture
- 163. Pinch
- 164. Coil
- 165. Slab
- 166. Clay Puzzled
- 167. Wheel Thrown 5” or Under
- 168. Wheel Thrown 6” or Over
- 169. Wheel Miscellaneous
- 170. Miscellaneous Clay work
- 171. Miscellaneous Glaze
- 172. Cut Out, Carved, Clay Lift, Sgraffito

Raku

- 173. Wheel Thrown
- 174. Hand Built
- 175. Gloss Glaze (Slip Cast Only)
- 176. Gloss Glaze (Wheel or Hand Built)
- 177. Matte Glaze (Slip Cast Only)
- 178. Matte Glaze (Wheel or Hand Built)
- 179. Matte & Gloss Combo (Wheel, Hand Built or Slip Cast)
- 180. Horse Hair (Wheel, Hand Built or Slip Cast)
- 181. Miscellaneous (Wheel, Hand Built or Slip Cast)

Stoneware & Stoneware Commercial Bisque

- 182. Crystal Glaze
- 183. Glaze
- 184. Underglaze
- 185. Utility
- 186. Miscellaneous

DIVISION 18 – FIRED GLASS

This Division is for all fired glass entries, Professional and Amateur. Glass judging based on firing of piece. However, add-on decorations are welcome. Entries must be fired to Cone 020 or 1159 temp or higher.

Premiums: For Divisions 18

Professional: 1 st - \$20	2 nd - \$15	3 rd - \$10	4 th – Ribbon
Amateur: 1 st - \$10	2 nd - \$8	3 rd - \$5	4 th – Ribbon

Professional

Class:

- 187. Sagged or Slumped Glass
- 188. Non-Fired Decoration on Sagged or Slumped Glass
- 189. Fused Glass
- 190. Fired Mixed Media on Glass
- 191. Jewelry

Amateur

Class:

- 192. Sagged or Slumped Glass
- 193. Non-fired Decoration on Sagged or Slumped Glass
- 194. Fused Glass
- 195. Fired Mixed Media on Glass
- 196. Jewelry

Premiums: For Division 19
1st - \$15 2nd - \$12 3rd - \$10 4th - Ribbon

DIVISION 19 – ARMED FORCES

Entries made by members of the Armed Forces. We welcome all service members – Active or Veterans – to enter this special division. Best of Division will receive a rosette and a special award.

Class:

- 197. Glaze
- 198. Underglaze
- 199. Non-Fired media
- 200. Fantasy
- 201. Holiday
- 202. Mixed Media (paper, napkin, hot glue, etc.)
- 203. Miscellaneous



DIVISION 20 – SENIORS

Seniors – 65 years of Age or Older, may compete in Senior or Amateur Division.

Class:

- 204. Crystal Glaze
- 205. Underglaze
- 206. Opaque stains
- 207. Holiday
- 208. Mixed Media

DIVISION 21 – HIGH SCHOOL

Must be a current Freshman (9th) through Senior (12th) in High School

Class:

- 209. Fired Media
- 210. Non-Fired Media

DIVISION 22

MADE BY PERSONS WITH DISABILITIES

Award: The Western Idaho Fair will award a “Best of Division” Rosette where items are deemed worthy of merit. The intent of this Division is to encourage disabled exhibitors. The Ceramics Department will accept and categorize all items entered. **If the workmanship of an exhibit surpasses the intent of Division 22, the item will be reclassified to keep competition fair for the disabled exhibitor. All work must be done by the entrant.**

Class:

- 211. Glaze
- 212. Non-fired media

DIVISION 23 – CHRISTMAS TREE CANDY DISH

This Division is for all entries both Professional and Amateur.
ALL FIRED ARTS MEDIA

Professional

D&B Supply will award 1st place \$25 and 2nd place \$15 and 3rd place \$10

Class:

- 213. Christmas Tree Candy Dish

Amateur

D&B Supply will award 1st place \$15 and 2nd place \$10 and 3rd place \$5.

Class:

- 214. Christmas Tree Candy Dish

DIVISION 24 – AMERICA’S 250TH ANNIVERSARY

This Division is for all entries both Professional and Amateur.
ALL FIRED ARTS MEDIA. No division trophy for this division, only premiums for 1st, 2nd and 3rd.

Professional

The Western Idaho Fair will award 1st place \$25 and 2nd place \$15 and 3rd place \$10

Class:

- 215. National Symbols (Flag, Eagles, Liberty Bell, Money, National Monuments, Bison, Rose, Uncle Sam, White House, etc.)

Amateur

The Western Idaho Fair will award 1st place \$15 and 2nd place \$10 and 3rd place \$5.

Class:

- 216. National Symbols (Flag, Eagles, Liberty Bell, Money, National Monuments, Bison, Rose, Uncle Sam, White House, etc.)